

PDU

Control Station

Control Station

Working Height counter top with 2 inch gromett

2'-8 1/2"
Working Height counter top with 2 inch gromett

2'-1"

Space must be no less that 25" to accommodate the CR Reader

2'-8 1/2"

See Control Revision

PDU 24X17 X 34.72



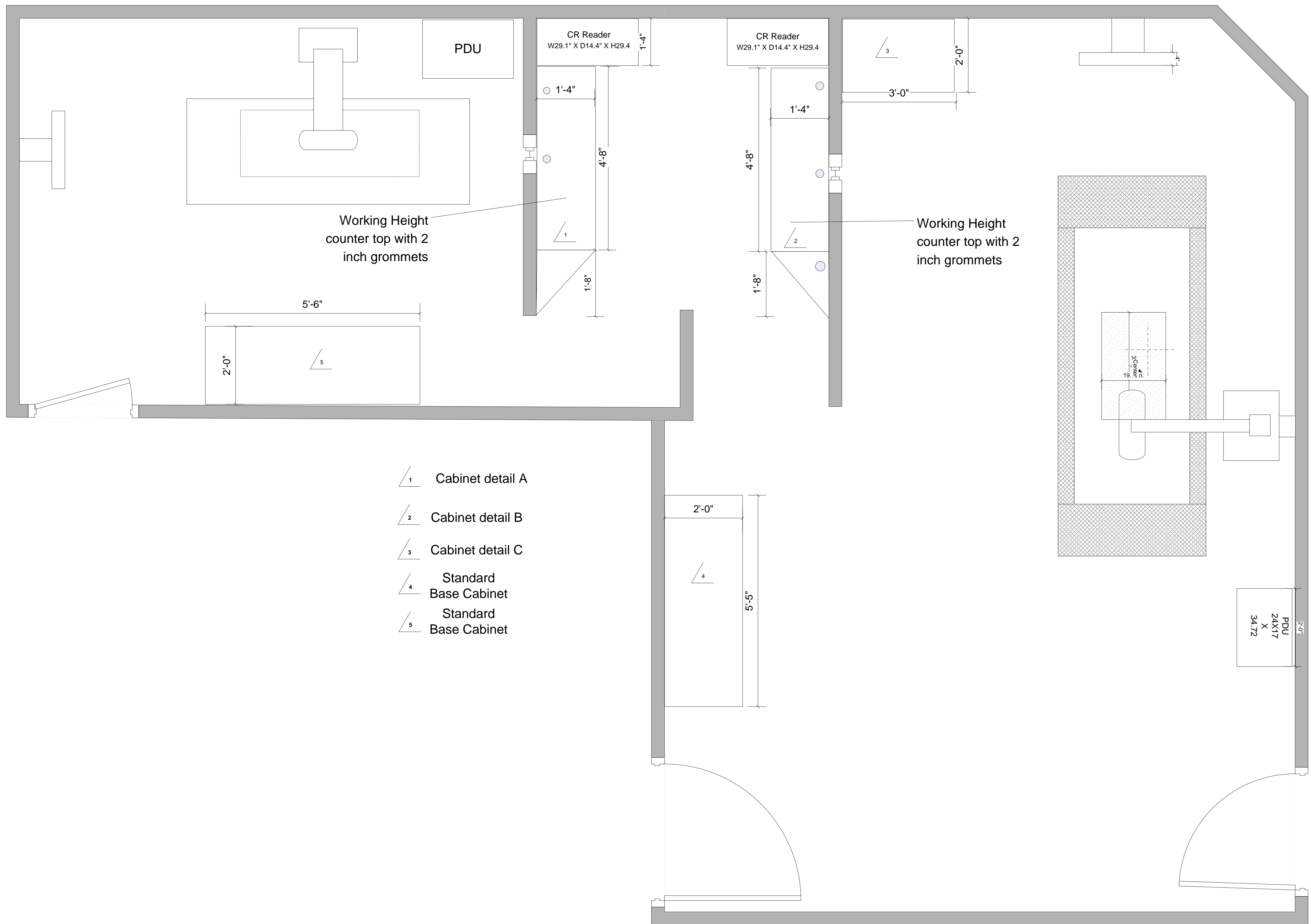
- 1/32 lead
- 1/16 lead

Must Overlap Barrier Wall

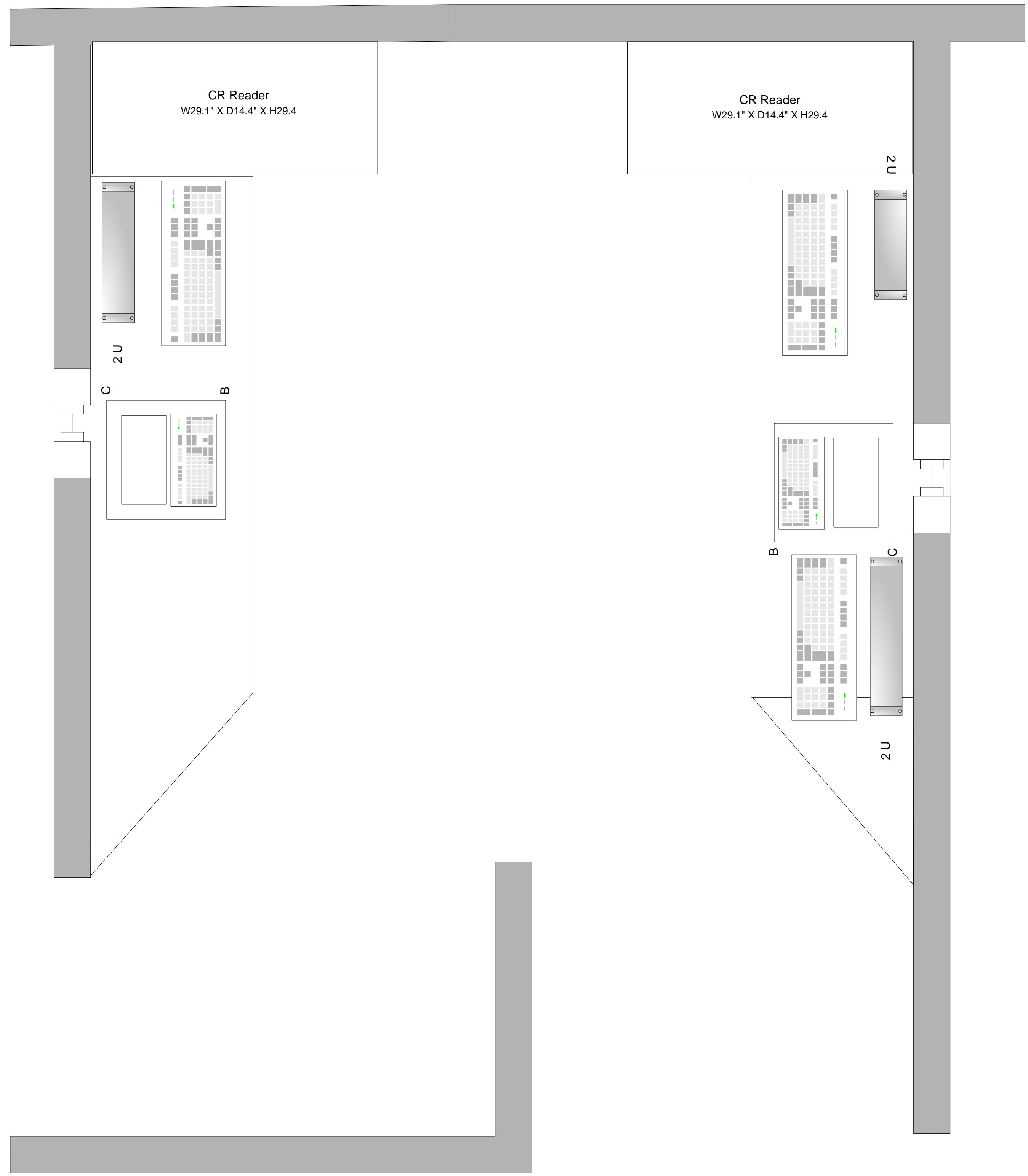
Must Overlap Barrier Wall

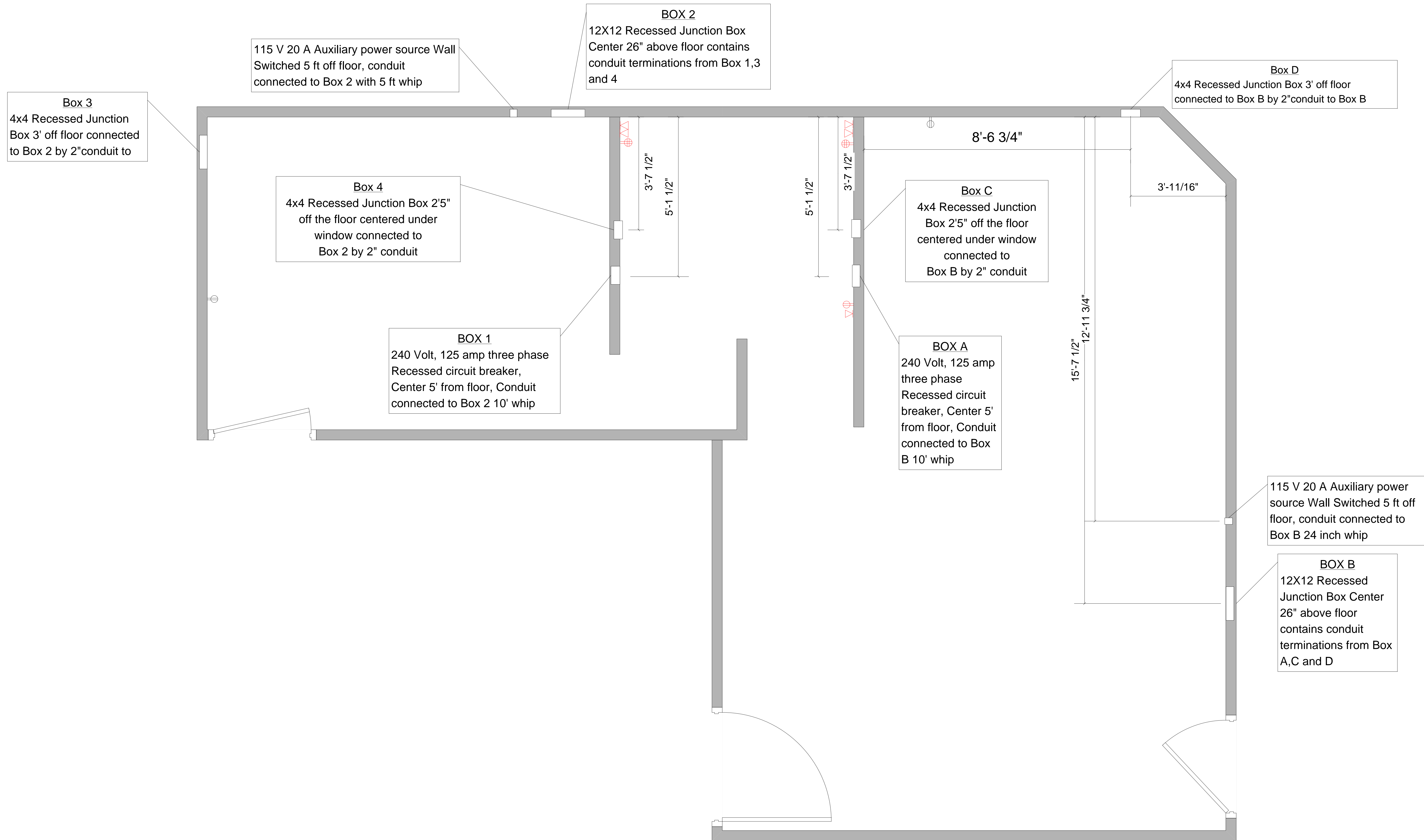
3'-6"

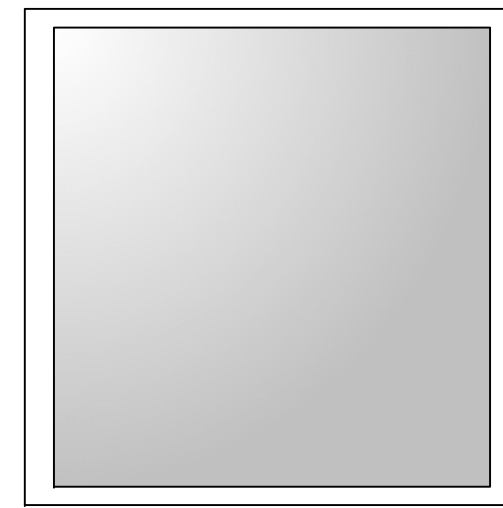
4'-0"



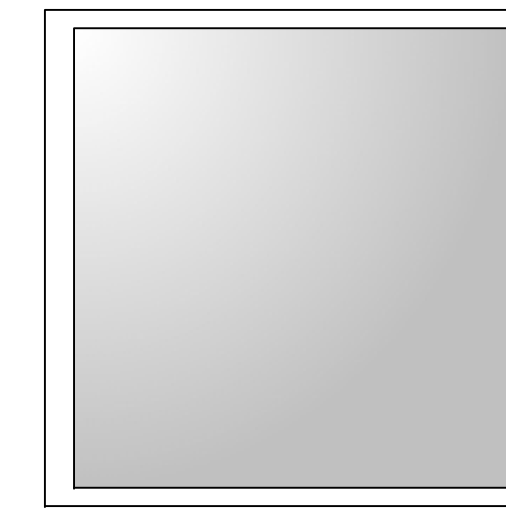
- 1 Cabinet detail A
- 2 Cabinet detail B
- 3 Cabinet detail C
- 4 Standard Base Cabinet
- 5 Standard Base Cabinet







Cabinet A



Cabinet B

